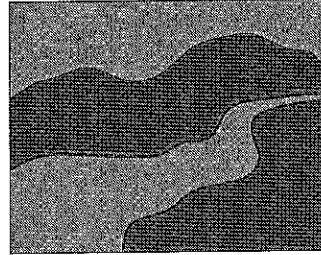


# San Dieguito River Park

---



## FISCAL YEAR 2017-18 BUDGET

APPROVED BY BOARD OF DIRECTORS MARCH 17, 2017

VOTES: Yes: Grosch, Gaspar, Jacob, Barnouw, Worden, Kersey, Hegenauer

Absent: Diaz, Bry

ATTEST:

A handwritten signature in black ink, appearing to be 'Kevin McKernan', written over a horizontal line.

Kevin McKernan  
Executive Director

**SAN DIEGUITO RIVER PARK**  
**FISCAL YEAR 2017-18 BUDGET**

**Budget Summary All Funds**

**Revenues**

	FY16/17	FY17/18
Coast-SCE Income (2017)	\$ 301,196	\$ 268,368
General Operating Income	\$ 1,117,782	\$ 1,165,006
Capital Project Income		
<b>Total</b>	<b>\$ 1,418,978</b>	<b>\$ 1,433,374</b>

**Expenditures**

Coast Fund (2017)	\$ 301,196	\$ 268,368
General Operating Fund	\$ 1,117,782	\$ 1,165,006
Capital Projects		
<b>Total</b>	<b>\$ 1,418,978</b>	<b>\$ 1,433,374</b>

**SAN DIEGUITO RIVER PARK  
FISCAL YEAR 2017-18 BUDGET**

**General Operating Budget**

Account		Approved FY 15-16	Approved as Amended FY16/17	Proposed FY 17-18
	<b><u>REVENUES</u></b>			
47535	Habitat Management Plan Income			
	CalTrans Bernardo Mountain Endowment (RSFF)	10,942	10,527	10,480
	HOA Fees- Golem Property (Paid monthly by HOA)	26,000	26,000	26,000
	Esco Endowment (Fidelity)	2,681	2,681	2,681
	Santa Maria Ck/Fenton Ranch Endow (Fidelity)	16,587	16,587	16,587
	Maderas Westridge (Navy Mit.) (Fidelity)	2,648	2,648	2,648
	Ramona Grasslands (Fidelity)	2,161	2,161	2,161
	Other HMP Interest Earned (Fidelity)	14,292	9,634	11,482
	SDRVC Bernardo Mtn Endowment	18,296	18,695	18,000
	<b>Subtotal HMP Income</b>	<b>75,311</b>	<b>88,933</b>	<b>90,039</b>
48117	Sandag W19 Reimbursement	45,000	30,000	30,000
	Sikes Adobe Historic Farmhouse Events	10,300	5,440	5,440
45511	22nd Ag. Offtrack Betting Revenue	22,500	10,000	10,000
45511	22nd Ag. Consent Decree Revenue	20,000	20,000	20,000
47526	Donations Transferred from SDRVC	3,000	3,000	3,000
	SDRP San Diego Foundation Endowment			20,000
47540	Nontaxable Sales	125	-	-

**SAN DIEGUITO RIVER PARK  
FISCAL YEAR 2017-18 BUDGET**

47615	Taxable Sales (T shirts, videos, books)	<u>1,200</u>	<u>500</u>	<u>500</u>
	<b>Subtotal- Non Member Agency Contribution Revenues</b>	<b>195,732</b>	<b>157,873</b>	<b>178,979</b>
	FY15/16 carryover		39,997	
45918	Member Agency Contributions	<b>921,810</b>	<b>959,909</b>	<b>986,027</b>
	<b>Total General Operating Fund Revenues</b>	<b>1,117,542</b>	<b>1,157,779</b>	<b>1,165,006</b>
	<b><u>EXPENDITURES</u></b>			
	Salaries and Benefits			
51110	Permanent Wages (Includes Coast Budget offset)	551,917	545,391	548,261
51410	Retirement- CERS Tier C (26.91% ER Contrib)	70,938		
51410	Retirement- CERS Tier A and B (33.05% ER Contrib)	109,214		
	Combined - CERS Tiers		180,518	180,518
51415	Other Post Retirement Benefits (OPEB 1.78%)	9,824	10,192	10,192
51421	Pension Obligation Bond Repayment (6.8%)	37,530	38,168	38,168
51450	OASDI and Medicare (6.2+1.45%= 7.65%)	42,222	42,146	42,146
51510	Employee Group Life Ins., Disab Insur.	1,500	1,017	1,017
51530	Worker's Compensation Insurance	28,500	23,500	23,500
51550	Flex Credit (Café Health Plan)***	55,768	85,470	103,968
51560	Unemployment Insurance	<u>1,500</u>	<u>196</u>	<u>196</u>
	Benefit sub-total		381,207	399,705
	Coast Budget Benefit offset***		(32,749)	(27,345)
	<u>Wages and Benefits Sub-Total</u>	<u>908,913</u>	<u>893,849</u>	<u>920,621</u>
	Habitat Management Plan Services, Supplies and Materials			
52220	Materials	6,500	6,500	6,500

**SAN DIEGUITO RIVER PARK  
FISCAL YEAR 2017-18 BUDGET**

	Consultants	9,250	9,250	9,250
	Lagoon Mitigation Sites- planting, watering, monitoring	<u>5,000</u>	<u>5,000</u>	<u>5,000</u>
	Subtotal- Habitat Land Management	20,750	20,750	20,750
	Trails and Land Management (TLM)			
52220	Open Space/Trails Management Materials	10,000	10,000	10,000
	Open Space/Trails Management Work Crews	6,800	6,800	6,800
	Open Space/Trails Management Operations	3,675	3,675	3,675
	Fire Breaks	5,200	5,200	5,200
	Tractor/Trailer Repair and Maintenance	3,700	3,700	3,700
	Trailhead Portapotties (2 regular, 2 ADA)	<u>6,450</u>	<u>12,000</u>	<u>12,000</u>
	Subtotal- TLM	35,825	41,375	41,375
	Small Projects			
52396	Solar Automatic Gates Repair	<u>3,500</u>	<u>3,500</u>	<u>3,500</u>
	Subtotal- Small Projects	3,500	3,500	3,500
	Office and Administration Services, Supplies, and Materials			
52062	Telephone/Cell/Fax/Satellite Service	8,600	8,600	10,200
	Insurance- General and Property Liability, Auto	14,500	17,000	18,700
52134	Insurance- Medical/Liability for Volunteers	500	500	500
52182	Vehicles- Fuel	10,500	10,500	10,500
52220	Vehicles- Maintenance, Tires, Repair	8,500	8,500	8,500
	Office Operation and Maintenance	6,878	9,100	8,700
	(Recycling- \$180, Dumpster Rental- \$896, Janitorial- \$1446, SDG&E- \$4900, Window Cing \$600, water \$678)			

**SAN DIEGUITO RIVER PARK  
FISCAL YEAR 2017-18 BUDGET**

	fire sprinkler monitoring \$660		660	
	Headquarters repair/maintenance		10,000	
	Coast water quality treatment pond maintenance			7,000
	Storm damage repairs			10,000
	Uniform Allowance	1,200	1,440	1,500
	Lake Hodges Bike/Ped Bridge Lease (to SD)	3,415	3,415	3,415
	Dept of Health Permit/ Lake Hodges Bridge	535	535	535
	Sikes Adobe S, S, &M	18,603	26,425	18,000
	(Grounds/House Upkeep, termite			
	Operations/Utilities, Programming)			
52186	Equipment Service Contract- phone system	733	733	860
52270	Memberships	600	600	600
52304	Miscellaneous- Petty Cash Expenditures	700	700	700
52330	Office Supplies	3,500	3,500	3,500
52332	Postage	800	800	900
52334	Printing- Stationary/Maps	1,000	1,000	1,000
52370	Professional Services	38,053	51,377	40,500
	Attorney- \$20,000			
	Auditor- \$11,500 (previously \$8,553 in 16/17)			
	County- Treasury Services- \$4,500			
	Computer- Website Services- \$1,500			
	Graphic Consultant \$3,000			
52394	Maps, Photos	250	250	500
52304	Legal Notices	300	300	300
52550	Education/Volunteer Programming	10,300	15,800	12,300
	Interpretive Panel Replacement \$0			
	Water/Ice/Refreshments \$1500			
	Annual Volunteer Recognition Event \$2000			

**SAN DIEGUITO RIVER PARK  
FISCAL YEAR 2017-18 BUDGET**

	Scout Plaques/Volunteer Awards \$1500			
	Other Events- EarthDay \$800			
	Docent Training/Volunteer Patrol Training \$1500			
	Intern Stipends/Outreach/Scholarships \$2,500			
	Educational Programming- Inland \$2,000			
	Kiosk Displays \$200			
	Background Scans \$300			
52560	Book, Publications, Subscriptions	200	200	200
52566	Replacement Computer Equipment	2,000	1,500	1,500
52610	Training (Seminars, Trails Conf., Herbicide App. Lic.)	3,000	3,000	3,000
52672	Utilities (at undercrossing)	600	120	120
52304	Computer Software (Quickbooks,	750	750	750
52304	Email Distribution Service	500	500	780
	Subtotal- Office Services, Supplies, and Materials	136,517	177,805	165,060
	Other Charges			
53426	Lease/purchase copier equipment	4,037	4,500	5,700
56311	Amortization Reserve (for truck/replacement)	8,000	16,000	8000
	Subtotal- Other Charges	12,037	20,500	13,700
	<b>Total General Operating Fund Expenditures</b>	<b>1,117,542</b>	<b>1,157,779</b>	<b>1,165,006</b>

**SAN DIEGUITO RIVER PARK  
FISCAL YEAR 2017-18 BUDGET**

**Member Agency Contributions**

	Adopted FY14-15	Updated Formula 2015 JEP A	Approved FY15-16	Approved FY16-17	Proposed FY17/18
<b>Total Member Contributions</b>	\$ 819,679		\$ 921,810	\$ 959,909	\$ 986,027
<b>Del Mar</b>	\$ 49,181	0.06	\$ 55,309	\$ 57,595	\$ 59,162
<b>Solana Beach</b>	\$ 49,181	0.07	\$ 64,527	\$ 67,194	\$ 69,022
<b>Poway</b>	\$ 106,558	0.10	\$ 92,181	\$ 95,991	\$ 98,603
<b>Escondido</b>	\$ 106,558	0.13	\$ 119,835	\$ 124,788	\$ 128,184
<b>County of San Diego</b>	\$ 254,100	0.32	\$ 294,979	\$ 307,171	\$ 315,529
<b>San Diego</b>	\$ 254,100	0.32	\$ 294,979	\$ 307,171	\$ 315,529
<b>Total</b>	\$ 819,678	1.00	\$ 921,810	\$ 959,909	\$ 986,027



**SAN DIEGUITO RIVER PARK  
FISCAL YEAR 2017-18 BUDGET**

**Member Agency Contribution Formula – JEP A Exhibit D**

**Public Agency Contribution Formula for Fiscal Year 2014-15**

The FY2014-15 Public Agency Contribution Formula is based upon the following calculations, using the most recent U.S. Census data as of 2010, and current jurisdictional acreage within the JPA jurisdiction:

<b>Public Agency</b>	<b>Population</b>	<b>Population Weighted Percentage<sup>1</sup></b>	<b>Juris-dictional Acreage</b>	<b>Juris-dictional Acreage Weighted Percentage<sup>2</sup></b>	<b>Total (Population% + Acreage%)</b>	<b>Public Agency Contribution<sup>3</sup></b>
Del Mar	4,660	5%	459.77	2%	7%	6%
Solana Beach	12,867	8%	0	0%	8%	7%
Poway	47,811	8%	666.33	4%	12%	10%
Escondido	147,514	11%	850.35	4%	15%	13%
Unincorporated County	503,320	32%	55,885.91	4%	36%	32%
San Diego	1,376,173	32%	16,325.93	4%	36%	32%
					<b>114%</b>	<b>100%</b>

**<sup>1</sup>Population Weighted Percentage**

- 0-10,000 = 5%
- 10,001-50,000 = 8%
- 50,001-250,000 = 11%
- 250,001-500,000 = 22%
- 500,001 and above = 32%

**<sup>2</sup>Jurisdictional Acreage Weighted Percentage**

- 0 = 0%
- 1-500 = 2%
- Above 500 = 4%

**<sup>3</sup>Rounded and Normalized**

Except when required by the Public Agency Contribution Formula, beginning in the Fiscal Year 2017 Budget, Public Agency Contribution increases will not exceed 5% of the prior year's required contribution. This does not preclude any Public Agency from contributing funds in addition to the required contribution.

**SAN DIEGUITO RIVER PARK  
FISCAL YEAR 2017-18 BUDGET**

**Staffing, Salary Schedule and Organization Chart**

TITLE AND POSITIONS	FY 15-16		FY 16-17		Approved FY 17-18	
	Positions	Staff Years	Positions	FTE	Positions	FTE
Executive Director	1	1	1	1	1	1
Deputy Director	0	0	0	0	0	0
Management Analyst	0.75	1	0	0	0	0
Principal Planner	1	0.8	1	0.8	1	0.8
Trails and Resources Manager	1	1	1	1	1	1
Manager of Interp and Outreach			1	1	1	1
Senior Ranger	2	2	1	1	1	1
Interpretive Ranger	1	1	0	1	1	1
Ranger II	1	1	1	1	1	1
Ranger I	3	3	5	4	5	5
Museum Mgr/Interp Spec.	1	0.5	0	0	0	0
Secretary/Office Manager	1		1	0.8	1	0.8
<b>Total</b>	<b>12.75</b>	<b>11.3</b>	<b>12</b>	<b>11.6</b>	<b>13</b>	<b>12.6</b>

**SAN DIEGUITO RIVER PARK  
FISCAL YEAR 2017-18 BUDGET**

**Approved Coast Budget CY 2017**

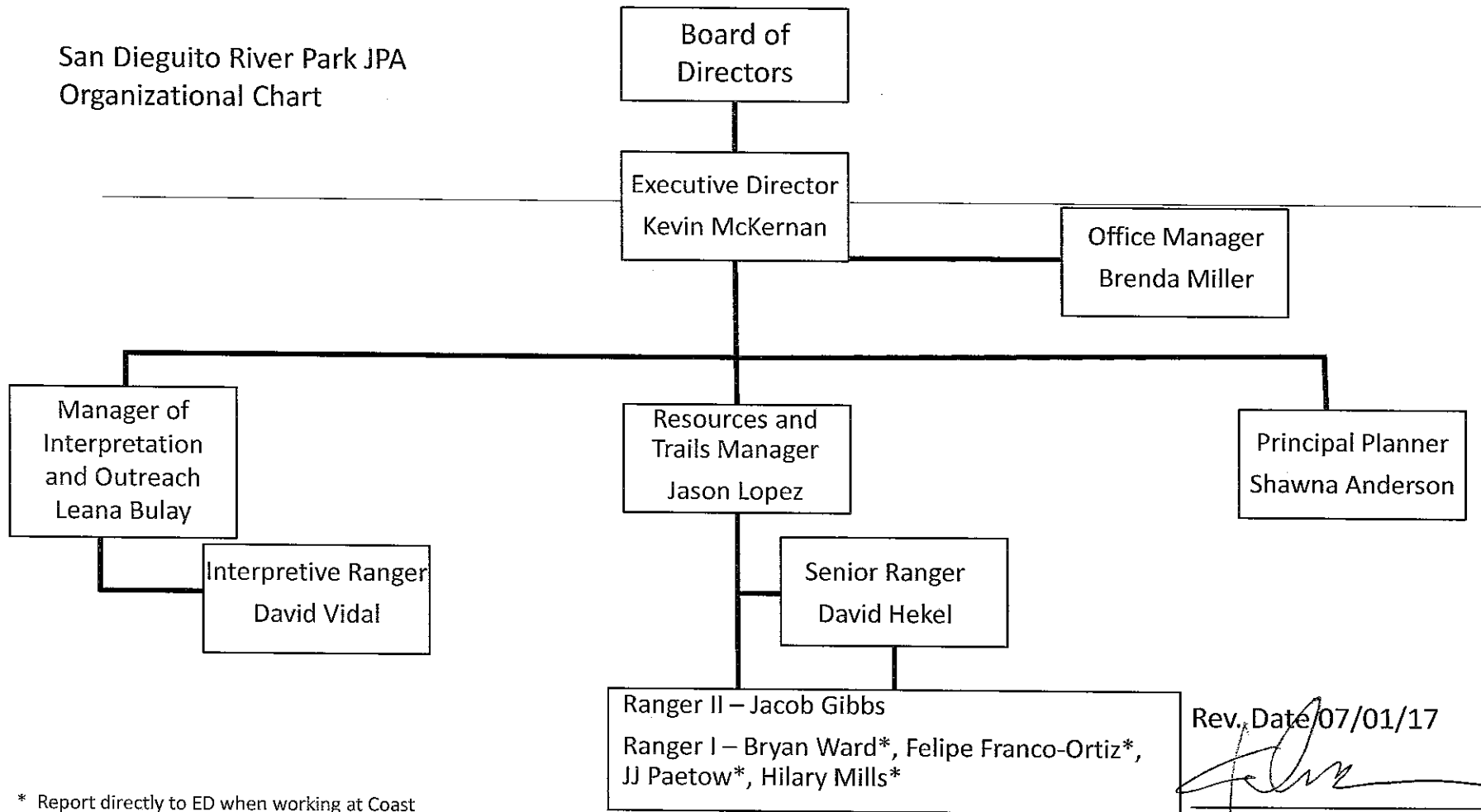
<u>Activity</u>	<u>Description</u>	<u>Details</u>	<u>Amount</u>
Staff	Park Ranger, full-time	Salary and Benefits	\$ 46,763
	Park Ranger, full-time	Salary and Benefits	\$ 44,059
	Manager of Interpretation	Salary and Benefits 0.5 FTE	\$ 35,156
	Workmans comp	pro-rated for 2.5 FTE	\$ 7,520
sub-total			\$ 133,498
	Intern (1 ea semester)		\$ 2,000
Uniform	Staff	Replacements	\$ 800
	Volunteers	T-shirts, badges for patrol, docents, maintenance crews	\$ 700
Cell Phone	Cell phone and service	For Ranger Staff \$115 per month (2 rangers, 12 months)	\$ 2,760
Office			\$ 48,000
Storage*		Tools, equipment, materials, signs, vehicles, etc.	
Work Vehicle	1/2 ton patrol vehicle	4x4, tool box, tow, first aid, etc with light bar & spot light	\$ -
	½ ton patrol vehicle	4x4, tool box, tow, first aid, etc. add light bar & spot light	\$ -
	Maintenance		\$ 1,950
	Fuel		\$ 3,800
	Vehicle Reserve		\$ 7,000
	Water Buffalo		\$ -
Staff Training		Including continuing education Hrs.	\$ 1,320
Hired Labor	Work Crews (1 day minimum \$1,500)	Urban Corps: Conservation work. Trash and debris clean up, fence repair, trimming, trail work, etc.	\$ 1,500
Materials			\$ 14,102
(includes trail surface maint., equip rental, herbicide, fencing repair, erosion control, bldg. materials			

**SAN DIEGUITO RIVER PARK  
FISCAL YEAR 2017-18 BUDGET**

Boardwalk demo and rebuild viewing platform			\$ -
Tools			\$ 2,500
Dump Fees			\$ 800
Gate- Utility Road		Install green gates to secure access to DS32 at public trail parking area	
Gate- Emergency trail access	low/no cost alternative identified		\$ -
San Andres landscape project		400 plants, Urban Corps, Mulch,	
Sanitary Services	3 Staging area ADA restrooms	Cleaned twice weekly.	\$ 8,200
Trail and Staging Area Landscape		Move Boulders to incorporate into landscape & prevent access to unauthorized areas	

Educational Materials		Printed Materials, information kiosks, educational aids, Interns	\$ 12,000
Volunteer Refreshments		Water, Granola Bars, etc.	\$ 660
Office Supplies		Equipment, files, paper, storage, pens, software, etc.	\$ 2,200
Administration		10% of direct costs	\$ 24,578
<b>Total</b>			<b>\$ 268,368</b>

San Dieguito River Park JPA  
Organizational Chart



Rev. Date 07/01/17

\* Report directly to ED when working at Coast